

KR33T Series

- » High efficiency up to 95%
- » Wide input voltage range
- » Galvanic isolation
- » High overload capacity
- » IGBT-based rectifier technology



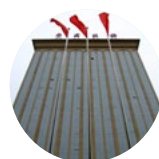
Finance



Telecommunication



Data Center



Government



National Defense



Energy



Medical



Transportation



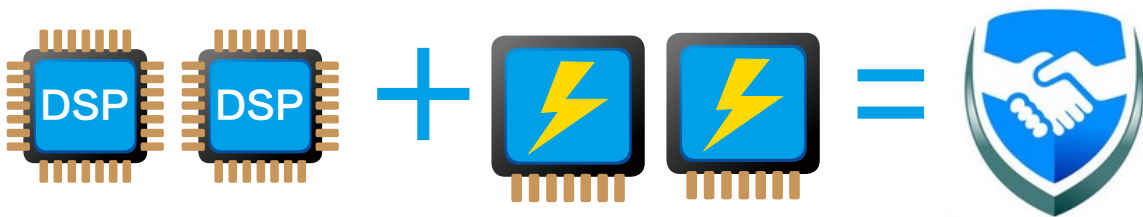
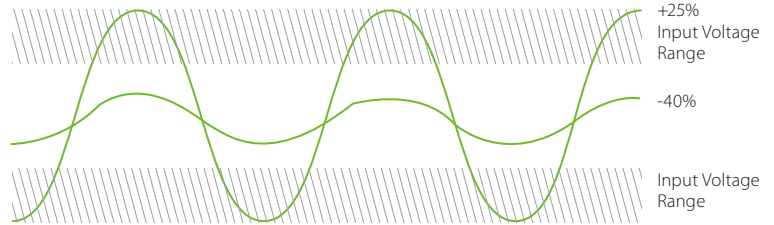
Electricity





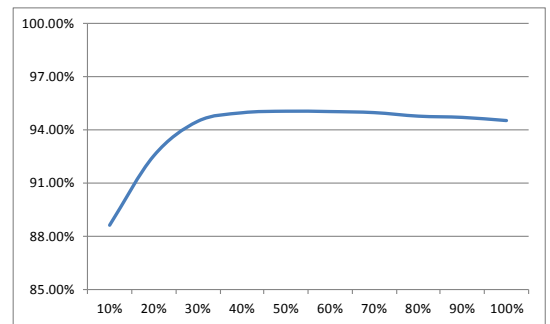
High reliability

- Wide input voltage range (-40%~+25%) assure high grid adaptability and prolong battery service life.
- Dual air ducts design shows better cooling performance
- Dual power and DSP redundancy design get higher reliability
- Water, Dust and Corrosion resistant coating in all PCB boards
- Robust EMC Performance due to electromagnetic shielding tech
- Intelligent fan speed control and failure detection function reduces the noise and prolongs fan service life



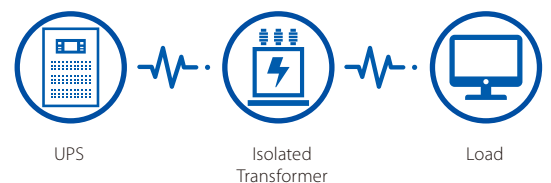
Green power

- High input power factor (Up to 0.999) and low Input THDi: <2.0% at full load, much less grid pollution and costs
- Low output THDv: <0.5%, higher adaptability to precision instrument
- High efficiency in online mode >95% and ECO mode efficiency >99%. 50% load >94.74%
- Load Bus sync (LBS) control decrease transfer time and current impact of dual bus system.
- Self-aging test function without load enables on-site commission



Completed galvanic isolation

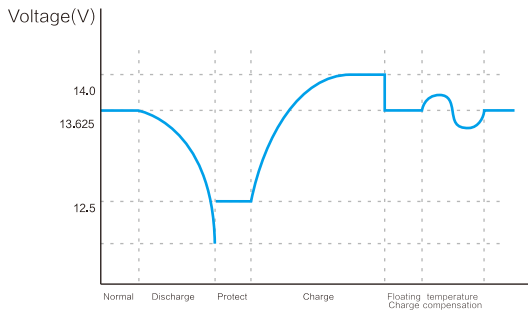
- Completed UPS output galvanic isolation for key components from the high voltage DC
- Full isolate from the external loads, reduce the harmonic disturbances
- Short circuit protection, restrain the high current puncture to UPS
- No effects to the UPS output performance or reduced impact of the inverter power components whilst supplying specific loads



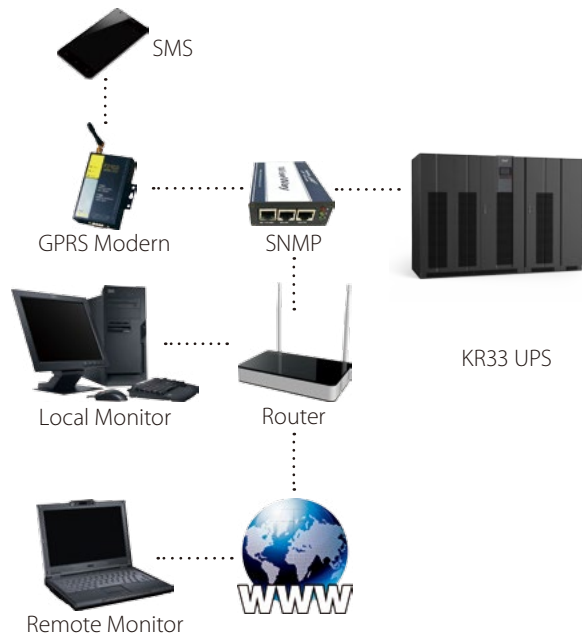


Intelligent Management

- Intelligent SNMP and MOD BUS achieves local monitoring and remote monitor
- Intelligent battery management, automatic boosting and floating charge control
- Battery self-test function and battery temperature compensation function improve the battery performance and extend battery use life
- Smart programmable dry contact communication function
- Intelligent fan control according the load capacity reduces the noise and prolongs fan service life



Intelligent battery management



Automatic fans control



Humanized Operation

- Easy operation with 7 inch LCD touch screen and LED on front door
- Easy to working modes setting by touch screen: Output voltage, Frequency, ECO mode, charging current and battery cells
- ON/OFF - Double Button design to prevent misoperation and touch screen failure
- EPO (Emergency Power off) button on front panel
- Large data storage capacity, 10000pcs events logs



More Options

- UPS management software
- SNMP & MODBUS communication
- IP grade upgrade & temperature sensor
- Lightning protection device C/D level
- Charging temperature compensation
- Input/bypass isolation transformer

Technical Specifications

MODEL	KR33300T	KR33400T	KR33500T	KR33600T
Input				
Rated voltage(V)	380/400/415(settable)			
REC voltage range(Vac)	228~475			
Bypass voltage range	±20%			
Bypass frequency sync(Hz)	50/60±5%(±10% optional)			
Battery(VDC)	480v (384V~504V, 32~42pcs 12V battery settable)			
Charging mode	Equalized and float Charging			
Charging current(A)	20~100A			
PF	≥0.999			
THDi	≤2%(full load)			
Output				
Voltage(V)	380/400/415Vac±1%			
Frequency(Hz)	50/60±0.02% (Battery mode)			
Load PF	0.9			
THDV (Linear load),%	≤0.5%			
THDV (Non linear load),%	≤2%; (RCD load PF=0.8,≤6%)			
Crest factor	3:1			
Voltage Transient range	±5%			
100% load system efficiency	95%			
Power consume without load	4.785kw (INV); 2.736kw(ECO)		5.745kw (INV) 4.34kw(ECO)	
Frequency sync range	45~55/54~66			
Inverter overload	130% 10min; 150% 1min;			
Inverter short circuit current-limiting	1150A	1600A	1900A	2300A
Bypass overload	130% long time;150% 10min;			
Transfer time(AC to DC)	0	0	0	0
ECO/normal mode transfer time	≤10 ms			
Other				
Maintenance Bypass	yes			
Display	Touch screen+ LED			
Communication port	RS232/485, dry contact (SNMP, MODBUS optional)			
DC start function	Optional			
Noise(dB)	72dB		75dB	
Working temp.(°C)	-5~40			
Storage temp.	-20~55			
Humidity	0~95%			
IP	IP20 (high level option)			
Approvals	EN62040-2:2006			
Dimension(w×d×h)(mm)	1600X1000X1800		2200X1000X1800	
Weight(kg)	1400	1700	2300	2400

* Specification is subject to change without prior notice.

Xiamen Kehua Hengsheng Co., Ltd.

Add: No. 457, Malong Road, Torch High-Tech Industrial Zone, Xiamen Fujian China

Tel: +86-592-5160516 Fax: +86-592-5162166 www.kehua.com